



# Health In Harmony

Rainforest communities' one health solutions from Indonesia, Madagascar, and Brazil deliver positive health, biodiversity, and climate outcomes.”



Photo: Tim Laman

Contribute > *Keep Salon Independent* **salon** subscribe f t u

NEWS & POLITICS CULTURE FOOD SCIENCE & HEALTH LIFE STORIES VIDEO

Search...

# Solutions exist to the crises of global warming and the collapse of nature: We just have to listen

By **KINARI WEBB - JONATHAN JENNINGS**

PUBLISHED MAY 14, 2019 7:00PM (EDT)

# HIH approach

Radical Listening methodology centers rainforest community expertise and solutions to return improved human health, forest health, biodiversity, and drawdown of CO<sub>2</sub>



# Impact Data 2008-2018

- Proof-of-concept in Borneo
- Published in [Proceedings of the National Academy of Sciences](#) (Jones IJ, MacDonald AJ, Hopkins SR, Lund AJ, Liu ZY et al. 2020)



**90%** drop in illegal logging households



**70%** reduction in forest loss



**\$65 million** in carbon emissions averted



**21,000 hectares** of secondary forest regrown



**2,500** critically endangered Bornean orangutans protected



**67%** drop in infant mortality

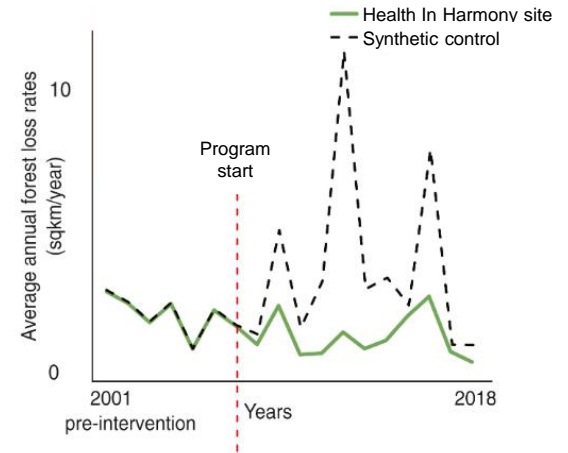
**PNAS**

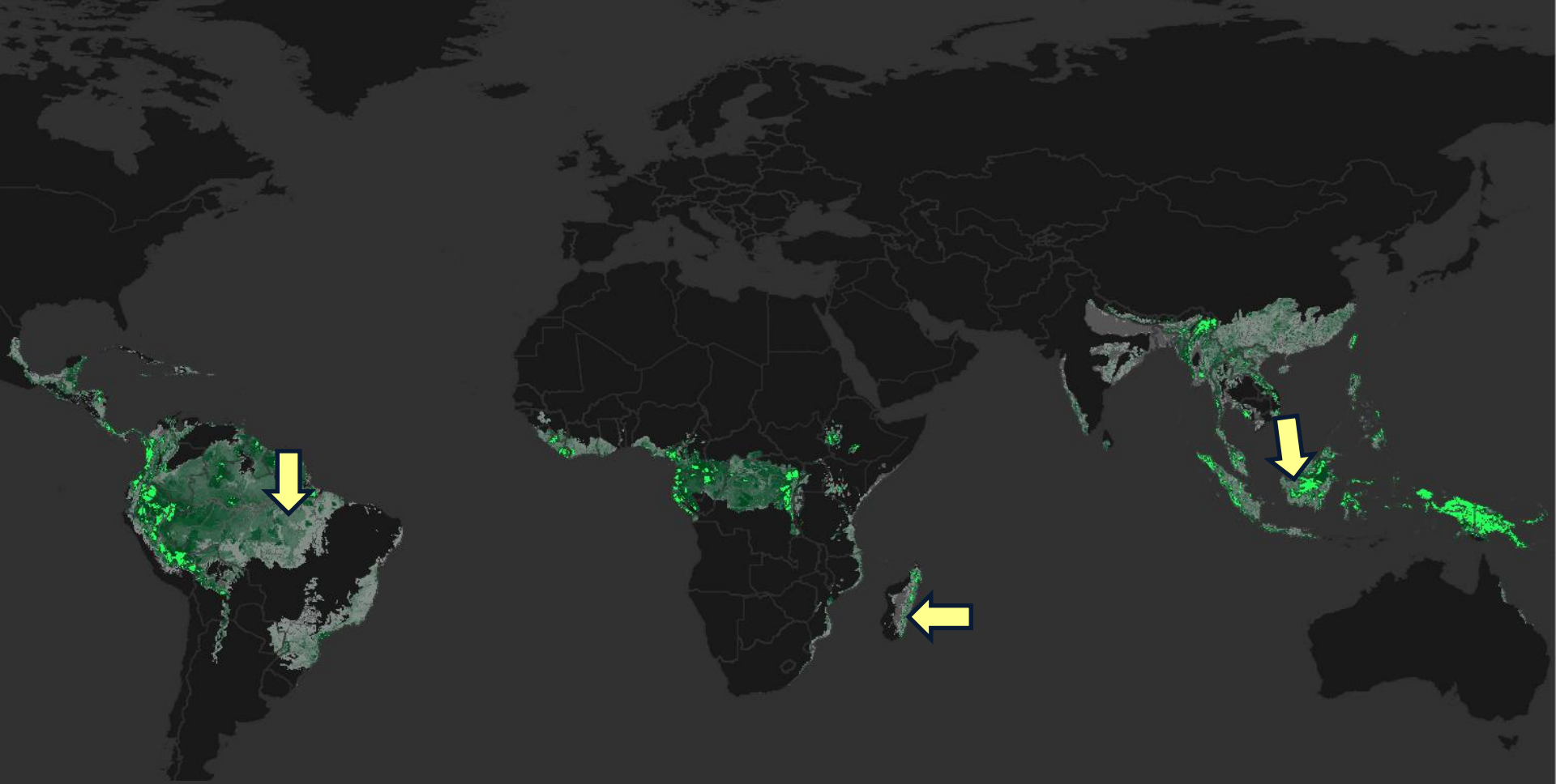
October 26, 2020

RESEARCH ARTICLE | BIOLOGICAL SCIENCES

Improving rural health care reduces illegal logging and conserves carbon in a tropical forest

## Forest Loss in Gunung Palung National Park

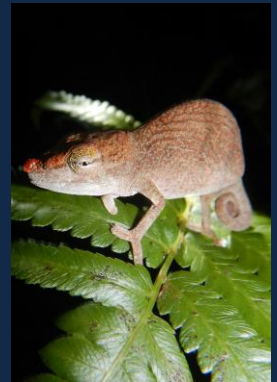
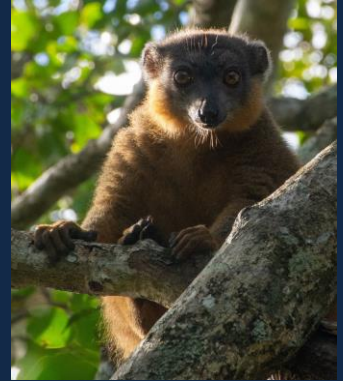
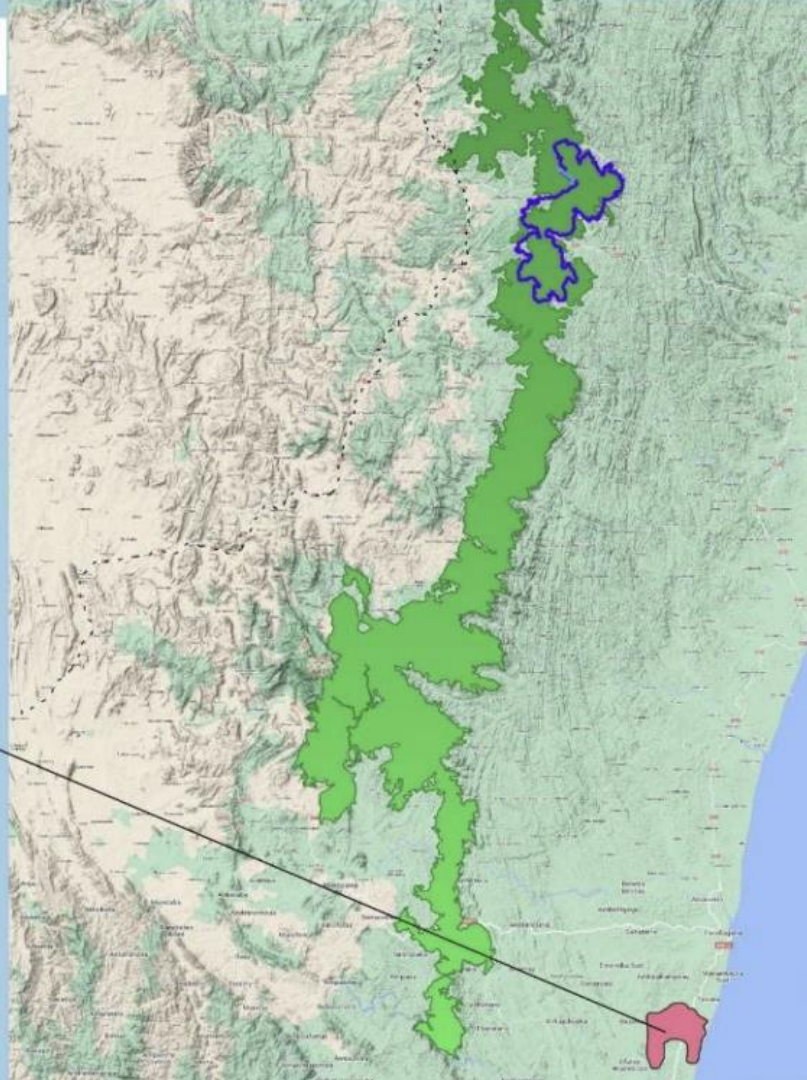




# MANOMBO SITE



- Manombo
- RNFPark
- Corridor Forest

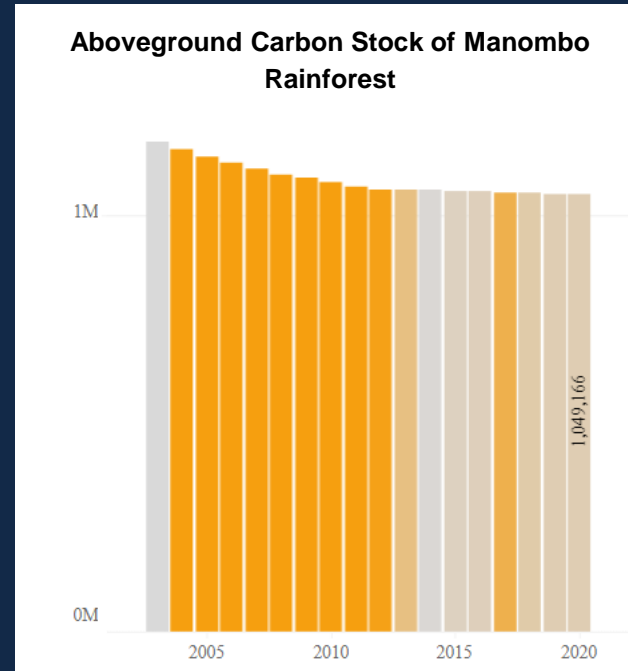


0 600 1200 km

# Deforestation may be stabilizing in Manombo



- **Woodwell Climate Research Center** analyzed forest carbon by satellite.
- The graph shows consistent deforestation from 2003 to 2017, and signs of stabilization.





[Jonathan@healthinharmony.org](mailto:Jonathan@healthinharmony.org)

[www.healthinharmony.org](http://www.healthinharmony.org)

[www.radicallistening.org](http://www.radicallistening.org)



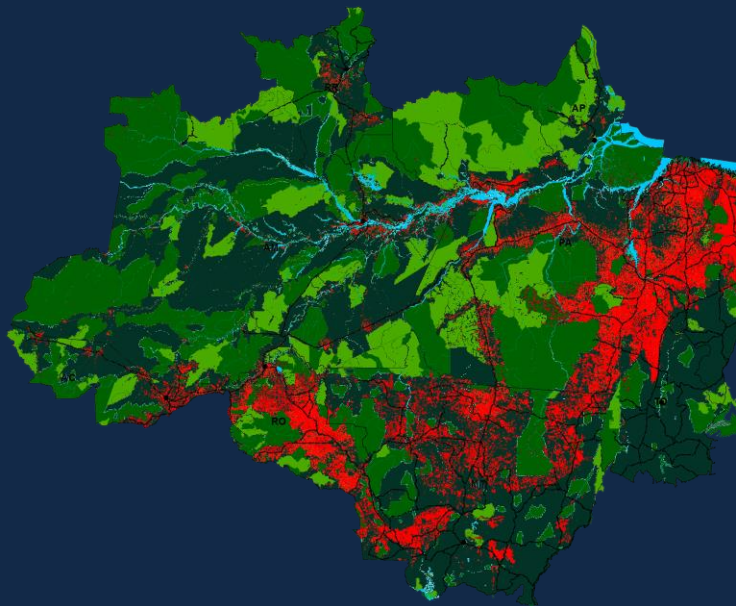
**Health In Harmony**  
Regenerating rainforests by listening to communities

## Recommendations:

Health In Harmony's evidence demonstrates that robust investment in one health solutions designed by Indigenous Peoples and Local Rainforest Communities can simultaneously improve human health, protect rainforest, preserve biodiversity, sequester carbon and cool the planet's climate.

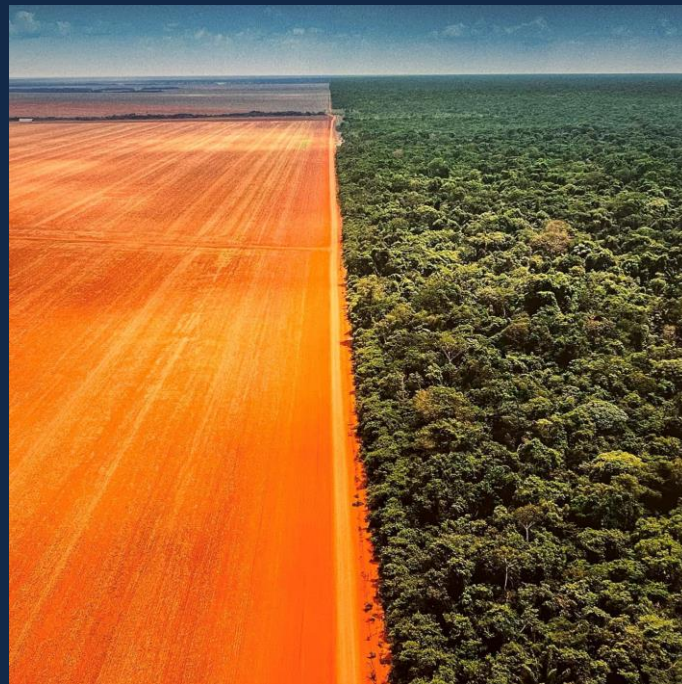
The community-guided, Radical Listening model provides a unique, scientifically validated framework to governments for achievement of multiple SDGs simultaneously, including positive human health, biodiversity, and climate outcomes.

# The forest is standing where traditional communities are



Map: INPE, 2018 | ISA, 2019 | IBGE 2015.

In red are areas that have been completely cleared, the dark green areas are indigenous lands and the light green ones are Conservation Units decreed by law, the vast majority with traditional populations - indigenous, riverine, quilombolas.



Border of indigenous land Wawi,  
registered by Kamikia Kisêdjê /2020

Mining in yanomami land - photo by Rogério Assis/ ISA



Rogério Assis - ISA

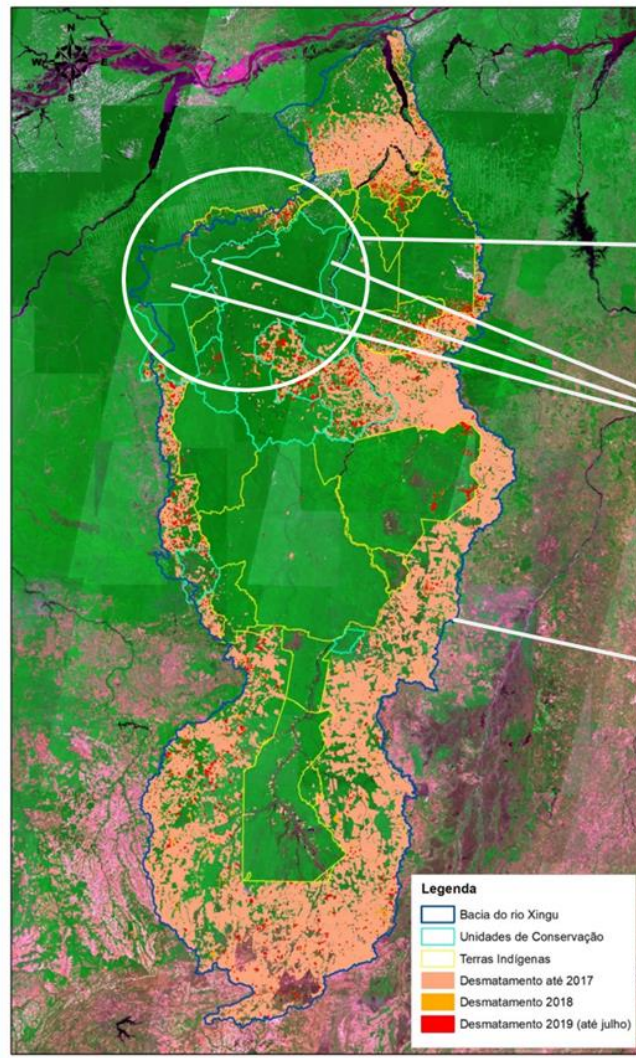


20 JAIDER ESBELL



Jaider Esbell:  
"art is an extension of our politics for this world"

# Middle Land - Xingu River Basin



Total Area of the Middle Land Mosaic: 8,5 million hectares  
11 indigenous Lands, 6 conservation units

Total Area of the 3 Extrativists Reserves – RESEX Riozinho do Anfrísio, RESEX Rio Iriri and RESEX Rio Xingu – 1,54 million hectares

Total Area of the Xingu Basin: 51,1 million hectares

Protected areas (Parks and ITs): 27 million hectares  
Xingu River: 1,700 km long

30 indigenous Lands, 8 conservation units, 20.776 indigenous people, 24 languages, 13.000 Rubber tappers









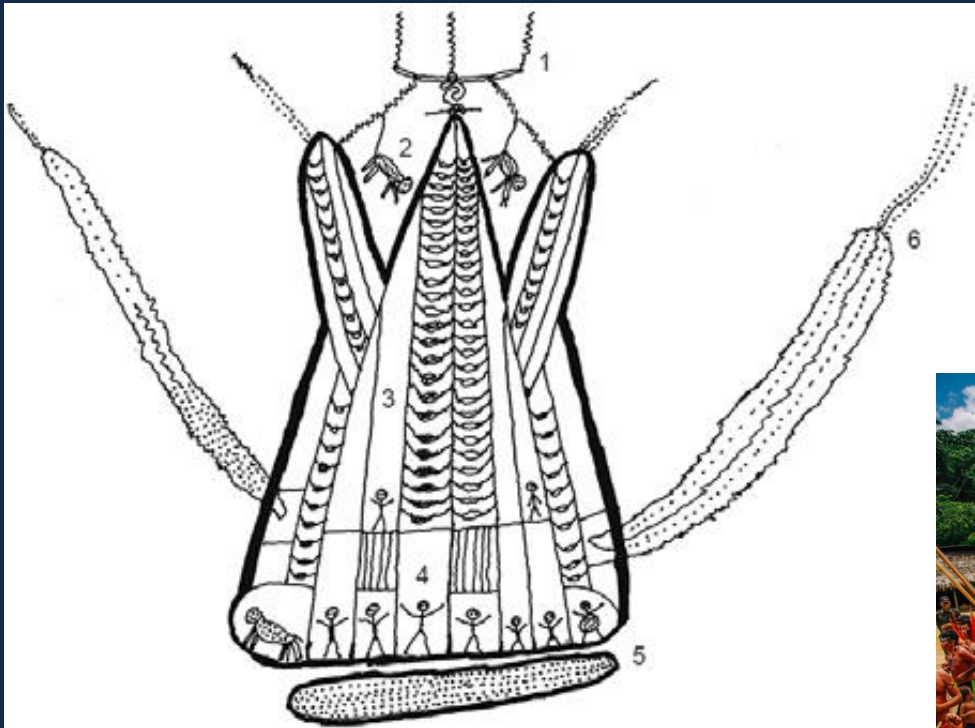


# ESCOLA PRAIA GRANDE









Drawing from Davi Kopenawa with systematic representation of shamans holding the sky



[Jonathan@healthinharmony.org](mailto:Jonathan@healthinharmony.org)

[www.healthinharmony.org](http://www.healthinharmony.org)

[www.radicallistening.org](http://www.radicallistening.org)



**Health In Harmony**  
Regenerating rainforests by listening to communities

## Recommendations:

Health In Harmony's evidence demonstrates that robust investment in one health solutions designed by Indigenous Peoples and Local Rainforest Communities can simultaneously improve human health, protect rainforest, preserve biodiversity, sequester carbon and cool the planet's climate.

The community-guided, Radical Listening model provides a unique, scientifically validated framework to governments for achievement of multiple SDGs simultaneously, including positive human health, biodiversity, and climate outcomes.